



**4" X 8" PAVER 8"**  
**\$150 EA.**



**TREES \$750 EA.**



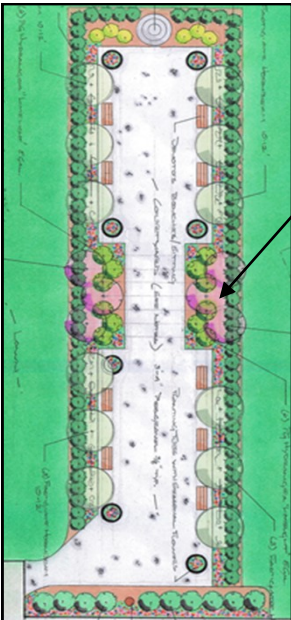
**GARDEN BENCH (9) \$2500 EA.**



**GARDEN GATES(2)**  
**\$5000 EA.**



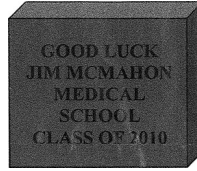
**FAMILY MEMORIAL (2) \$20,000 EA.**



**PLANTER**  
**\$500 EA.**



**\$300 EA.**



**GROTTO (10) \$1500 EA.\***



**BLESSED MOTHER STATUE**  
**\$10,000**



Memorials are on a first-come, first-serve basis.

They are designated only once in the prayer garden, unless it is a multiple share item. Once a Memorial has been reserved,

It is no longer available.

To reserve a Memorial,

please call the rectory at 845-634-4957

and speak to Mary.